

Welcome to Global Naturals..

Manufacturers and distributors of unique, highly effective natural supplements
and skin creams



About us..

Global Naturals manufacture a wide variety of capsulated herbal supplements, skin creams and serums. We create unique, safe and effective products that help people supplement their lives and improve wellbeing. We're proud to offer a range of 'high demand' herbal supplements made from only the finest pharmaceutical grade ingredients available.

Modern manufacturing premises in the UK allow Global Naturals to ensure the highest standards of production quality, focused on providing a quick, efficient turnaround for our clients, no matter the size of the order.

Our UK and Cyprus based fulfilment partner manages the distribution of our clients orders direct to their customers and our bespoke e-commerce fulfilment software integrates quickly and easily across the entire e-fulfilment process and no matter what CRM systems our clients use. Our software integrates with all popular shopping carts including **Lime Light, EBAY, Amazon, Magento, OrangeHRM, Zencart, Konnektive CRM, Infusion, WooCommerce** and **Shopify**.

We will also happily work with our clients own in-house systems and tailor the process to suit, ensuring the fulfilment of customer orders is quick and simple.



Our UK warehouse, located in Blakelands, in the prime distribution City of Milton Keynes, 45 miles north of London, with excellent transportation links



Our product range..

Nutraceuticals - We supply the best quality nutritional supplements;

- ★ Tablets - chewable, film/sugar/enteric coated, timed or sustained relief
- ★ Encapsulation - gelatine and vegetarian, printed capsules (for brand reinforcement)
- ★ Wide range of shapes and sizes, bespoke tooling shapes also available
- ★ State of the art packaging facilities and inhouse design service
- ★ Manufacturing to the GMP Code of Practice and ISO9001:2000 Quality Accreditation
- ★ Manufacturing Safety Data Sheet (MSDS) for all products available on request
- ★ NPD and formulation expertise
- ★ Legislation advice, prior to manufacture and after launch
- ★ Friendly and professional customer service



Our product range..

Cosmeceuticals - We supply superior cosmeceutical products;

- ★ Gels, moisturising and anti-aging creams, serums and lotions
- ★ State of the art packaging facility and inhouse design service
- ★ All products are EU registered with a CPNP number provided on completion of production
- ★ Manufactured by CTPA member (Cosmetics, Toiletry and Perfume Association)
- ★ NPD and formulation expertise
- ★ Manufacturing Safety Data Sheet (MSDS) for all products available on request
- ★ Legislation advice, prior to manufacture and after launch
- ★ Friendly and professional customer service



Our best sellers..

We offer hundreds of white label product options, here is a selection of our most popular lines;

★ **Skin Care**

- Anti-ageing cream
- Eye moisturising cream
- Anti-ageing serum
- Eye lift serum
- Eyelash enhancer
- Cellulite cream

★ **Sports Performance**

- Muscle/N.O
- Testosterone
- Whey protein

★ **Weight Loss**

- Garcinia plus
- Garcinia whole fruit
- Ketones
- Cleanse
- Green coffee

★ **Health & Wellbeing**

- Male botanicals
- Mood/Relax (other options available)
- Sleep aid
- Nootropics
- A-Z Multi vitamins and Minerals
- Multivitamins



Our best sellers..







INTERNATIONAL MANUFACTURING & FULFILMENT

Ingredients

Aqua (Water), Glycerin, Hamamelis Virginiana (Witch Hazel) Water, C12-15 Alkyl Benzoate, Cyclopentasiloxane, Butylene Glycol, Carbomer, Phenoxethanol, Dimethicone Copolyol, Cyclohexanone, Propylene Glycol, Acrylamide/Sodium Acryloyldimethyltaurate Copolymer, Diazolidyl Urea, Isobutylacrylate, Sodium Hydroxide, Disodium EDTA, Polysorbate 80, Sodium Lactate, 2-Bromo-2 Nitropropane-1,3-Diol, Polysorbate 20, Citric Acid, Sodium Benzoate, Potassium Sorbate, Iodopropynyl Butylcarbamate, Palmitoyl Oligopeptide, Palmitoyl Tetrapeptide-7.

30ml Anti-Ageing Serum

ACTIVE INGREDIENTS:

Matrieryl 3000

An antioxidant composed of 2 peptides: Palmitoyl Oligopeptide and Palmitoyl Tetrapeptide-7. Stimulates the matrix molecules - Collagen 1, 3 & 4 and Fibronectin to reduce the appearance of wrinkles. 33% decrease in wrinkle density. 23% decrease in volume of wrinkles & 20% decrease in depth of wrinkles can be achieved

Witch Hazel

Anti-inflammatory & soothing effects.

EU COMPLIANT

uksales@globalnaturals.com www.globalnaturals.com

MADE IN THE UK

CPNP 11111111







INTERNATIONAL MANUFACTURING & FULFILMENT

Ingredients

Dimethicone Crosspolymer, Cyclomethicone, Cyclopentasiloxane, Cyclohexanone, Glycerin, Dipropylene Glycol, C12-15 Alkyl Benzoate, Aqua (Water), Butylene Glycol, Carthamus Tinctorius (Safflower) Seed Oil, Phenoxethanol, Prunus Amygdalus Dulcis (Sweet Almond) Oil, Propylene Glycol, Tocopheryl Acetate, Diazolidyl Urea, Quercus Suber Bark Extract, Retinyl Palmitate, Arachis Hypogaea (Peanut) Oil, Sodium Lactate, Carbomer, Polysorbate 20, Iodopropynyl Butylcarbamate, BHA, BHT, Palmitoyl Oligopeptide, Palmitoyl Tetrapeptide-7.

15ml Eye Lift Serum

ACTIVE INGREDIENTS:

Matrieryl 3000

An antioxidant composed of 2 peptides: Palmitoyl Oligopeptide and Palmitoyl Tetrapeptide-7. Stimulates the matrix molecules - Collagen 1, 3 & 4 and Fibronectin to reduce the appearance of wrinkles. 33% decrease in wrinkle density. 23% decrease in volume of wrinkles & 20% decrease in depth of wrinkles can be achieved

Vitamin E Acetate (Tocopherol)

Anti-oxidant & skin conditioning properties. Help protect from the environment.

Vitamin A Palmitate

Small molecular structure allows for penetration into the outer layers of the skin and work to repair the lower layers where Collagen and Elastin help to prevent the appearance of aging skin, wrinkles and fine lines.

Suberlift (Quercus Suber Bark Extract)

Clinically proven botanical instant smoothing tensor that helps provide lift & firming to skin.

EU COMPLIANT

uksales@globalnaturals.com www.globalnaturals.com

MADE IN THE UK

CPNP 11111111







INTERNATIONAL MANUFACTURING & FULFILMENT

Ingredients

Aqua (Water), Glycerin, Hydroxyethylcellulose, 1,2-Hexanediol, Caprylyl Glycol, Citric Acid, Panthenol, Tocophenol, Biotinoyl Tripeptide-1.

4ml Eyelash Enhancer

ACTIVE INGREDIENTS:

Biotinoyl Tripeptide-1

A specialized synthetic molecule containing 3 amino acid residues, Glycine, Histidine and Lysine and is considered a protein derivative. Contains Biotin which is essential for cellular growth in the body. In-Vitro tests show the capability of this ingredient to encourage the synthesis of adhesion molecule Lamin-5 and Collagen IV which both help to firmly anchor the eyelashes so preventing loss. Lashes will look thicker and longer after 14 days use.

Panthenol

Well known haircare ingredient and moisturiser which smooths and conditions lashes bearing them well and lastness.

EU COMPLIANT

uksales@globalnaturals.com www.globalnaturals.com

MADE IN THE UK

CPNP 11111111



Our best sellers..




Global Naturals
INTERNATIONAL MANUFACTURING & FULFILLMENT

Ingredients

Aqua (Water), Cyclopentasiloxane, Glycerin, Dimethicone, Cetearyl Glucoside, Cetearyl Alcohol, Cyclohexasiloxane, Ethoxydiglycol, Cetareth-20, Tocopheryl Acetate, Phenoxylethanol, Sodium Acryloyl Phosphate, Palmitoyl Hydroxyethyl Wheat Protein, Polyacrylamide, Acrylates C10-30 Alkyl Acrylate Copolymer, C13-14 Isoparaffin, Diiodum EDTA, Ethylhexylglycerin, Tetrasodium Glutamate Diacetate, Laureth-7, Palmitoyl Dipptide-5, Diaminobutyl Hydroxyethylenimine (Tetrapeptide), Palmitoyl Dipptide-5, Diaminohydroxybutyrate (Tripeptide), Sodium Hydroxide.

30ml Anti-Ageing Moisturising Cream

ACTIVE INGREDIENTS:

Desqualin PVB
Palmitoyl Hydroxyethyl Wheat Protein

Stay C10
Sodium Acryloyl Phosphate

Vitamin E Acetate

Synacts

BENEFITS:

Long term redermatizing action wrinkle filler. Quick mechanical action reducing effect to smooth out facial expression wrinkles. Long term biological action to help fill all wrinkles.

Anti-oxidant for collagen synthesis, especially when in combination with Vitamin E. Has the effect of quenching the damaged reactive oxygen species.

Anti-oxidant and skin-conditioning properties. Helps protect from the environment.

A peptide combination which stimulates the proteins of the Dermal Epidermal Junction. Improves skin tensility, cellular cohesion and anti-wrinkle action enabling molecular communication with the skin. Clinical studies in vitro & vivo show significant skin improvement.

uksales@globalnaturals.com www.globalnaturals.com

0749777382

MADE IN THE UK




Global Naturals
INTERNATIONAL MANUFACTURING & FULFILLMENT

Ingredients

Aqua (Water), C12-15 Alkyl Benzoate, Butyrospermum Parkii (Shea Butter) Oil, Ethylhexyl Palmitate, Cyclopentasiloxane, Glycerin, Butylene Glycol, Sodium Acrylate Copolymer, Cyclohexasiloxane, Hydrogenated Polyisobutene, Sodium Polyacrylate, Creatine, Phenoxylethanol, Niacinamide, C18-C19 Alkane, Propylene Glycol, Polyglyceryl-10 Stearate, Phospholipid, Helianthus Annuus (Sunflower) Seed Oil, Diazolidinyl Urea, Fragrance Discolor (European Jelly Bark Extract, Parfum (Fragrance), Tocopherol, Allantoin, Diiodum EDTA, Tocareth-4, Carbomer, Sodium Lactate, Polysorbate 20, Potassium Citrate, Sclareinol, Isododecyltrimethylsilane, Sodium Hyaluronate, Palmitoyl Oligopeptide, Palmitoyl Tetrapeptide-7, Butylphenyl Methylpropyl Dimethyl Sulfone, Hydroxyisohexyl 3-Cyclohexene Carboxylate, Limonene.

15ml Eye Moisturising Cream

ACTIVE INGREDIENTS:

Allantoin

Togo Cosmo C100
(Creatine)

D-Alpha Tocopherol

Cytobol Lumin Eye

Sodium Hyaluronate

BENEFITS:

Natural soothing anti-irritant and skin protectant. Increase water content of the extra-cellular matrix which provides structural support to cells and is an important part of the connective tissue. Increases smoothness of the skin.

Provides revitalization of cell energy metabolism. Supports skin protection moisturizers.

Anti-oxidant.

An antioxidant composed of 12 peptides: Palmitoyl Oligopeptide and Palmitoyl Tetrapeptide-7. Stimulates the matrix molecules - Collagen I, 3 & 4 and Fibronectin to reduce the appearance of wrinkles. 33% decrease in wrinkle density. 22% decrease in volume can be achieved.

A powerful humectant that attracts and holds water providing moisture to the skin.

uksales@globalnaturals.com www.globalnaturals.com

0749777382

MADE IN THE UK




Global Naturals
INTERNATIONAL MANUFACTURING & FULFILLMENT

Ingredients

Aqua (Water), Isodonyl Isosonanoate, Glycerin, Caprylic/Capric Triglyceride, Synthetic Fluorophosphate, Ethoxydiglycol, Hydroxyethyl Acrylate/Sodium Acryloyldimethyl Taurate Copolymer, Cyclopentasiloxane, Cetearyl Glucoside, Cetearyl Alcohol, Cetareth-20, Phenoxylethanol, Squalene, Cyclohexasiloxane, Polysorbate 60, Ethylhexylglycerin, Parfum (Fragrance), Sorbitan Isostearate, Plankton Extract, Tocopherol, C177163.

120ml Cellulite Cream

ACTIVE INGREDIENTS:

Liput

Transcutol CG (Ethoxydiglycol)

Ranofair LF-2000

Fractionated Coconut Oil

BENEFITS:

Body sculpting product composed of Transcyslin Lutea. It activates the browning function of adipocytes to sculpt the body. This product reduces the appearance of cellulite and improves body contour, elasticity and firmness.

Transcutol® CG is a superior solubilizer and efficacy booster for cosmetic formulations, enhancing the penetration of cosmetic actives.

Provides smooth, even application of creams.

Skin moisturizing emollient.

uksales@globalnaturals.com www.globalnaturals.com

0749777382

MADE IN THE UK



Quality control..

All raw materials must pass stringent quality controls before they are utilised, we only use precursor materials that are of the highest quality. Further quality control is demonstrated by;

- ★ **Product Analysis** – This is recorded for each product manufactured, the analysis contains the specific components of the herbal product, including the batch number for each of the ingredients as well as the production methods used.
- ★ **Raw Materials** – These are purchased only from reputable wholesalers, each raw material in our products must come with a Certificate of Analysis obtained from the supplier. Our in house QA team also analyses the raw material for authenticity.
- ★ **Batch Numbers** – Once an order request has been received, the product to be manufactured is entered in the production records and a batch number assigned. The raw materials are released to the pharmacy after all the products have been checked for authenticity.
- ★ **Packaging Material** – All packaging materials are purchased only from reputable wholesalers and packaging and labels are produced to meet EU regulations and standards.



Manufacture..

In addition to the quality control protocols, Global Naturals adhere to the following guidelines to ensure the utmost quality control;

- ★ **Blending and Granulation** – All equipment used in the process of mixing and granulation is inspected by the Director of Operations prior to use. Batches are processed using strict written guidelines for each product. Following granulation and blending the powder blends are stored in a specially designed containers to ensure freshness and avoid any potential contamination.
- ★ **Encapsulation and Compression** – Once a test unit has been processed, a sample is issued to QA and compared to retained samples in order to ensure product integrity. Once a new unit has been approved, full production may begin. All final products are stored in quarantine in a climate controlled environment until final delivery to the customer.
- ★ **Production Timescales** – Our house formulas are typically available within a 2 –3 week leadtime.



Order fulfilment..

Order fulfilment is a crucial part of the overall customer purchasing experience and our priority is to select the most appropriate and efficient services for our clients needs and budget, and deliver a quality experience for customers every time.

We work hard to streamline the order administration as much as possible allowing our clients to focus on sales whilst we take care of the backend fulfilment.

Our bespoke e-commerce fulfilment software integrates quickly and easily across the entire e-fulfilment process and no matter what CRM systems our clients use, our software integrates with all popular shopping carts including **Lime Light**, **EBAY**, **Amazon**, **Magento**, **OrangeHRM**, **Zencart**, **Infusion**, **Konnektive CRM**, **WooCommerce** and **Shopify**. We also happily work with our clients own in-house systems and tailor our processes and systems to suit.

Our portfolio of UK and international shipping partners ensures we can match your requirements to the most cost efficient service available. We are constantly developing new services giving our customers an opportunity to widen their distribution, a recent development is shipping from the UK to Australia, door to door in as few as 3 days, ideal for time sensitive and subscription based products.



Our client CRM..

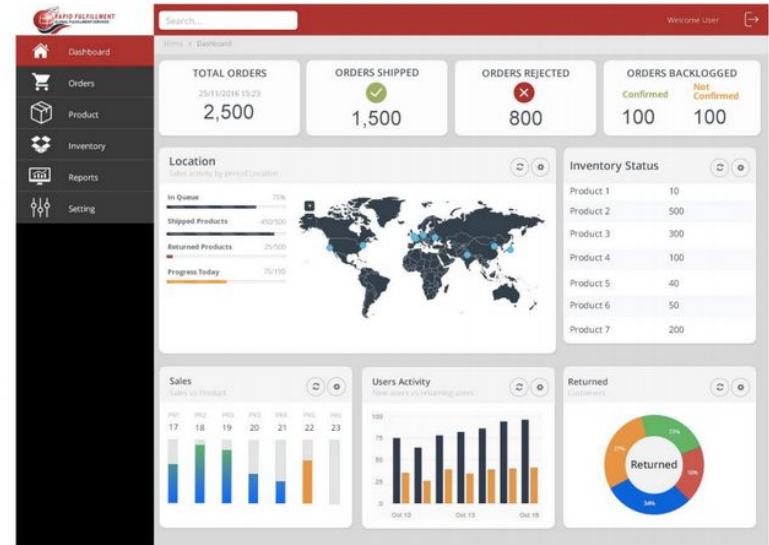
Through our dedicated, free to access CRM system our clients are able to track the status of their customer orders, returns and stock holding 24/7, giving complete visibility of the current status wherever and whenever they need.

We use an online OPIM system to process orders, generating an integrated invoice and label PDF from the imported order data. Our system receives a daily import file (twice daily for order volumes > 5000), containing all the required order data.

Once the file is imported, the OPIM will reject any orders with errors and import only valid orders. An email notification is then sent to technical contacts, informing of any invalid orders so appropriate action can be taken to rectify these.

In the event that there is not enough stock to ship every order, those unfulfilled will be placed on backorder until new stock arrives. All remaining orders are then printed and moved through the process to our pick & pack area.

Once the orders have been collected by our shipping partners they are marked as shipped and a reconciliation file is produced in ftp, this normally happens by 12 GMT or 17:00 GMT.



CRM Dashboard shows key data at a glance



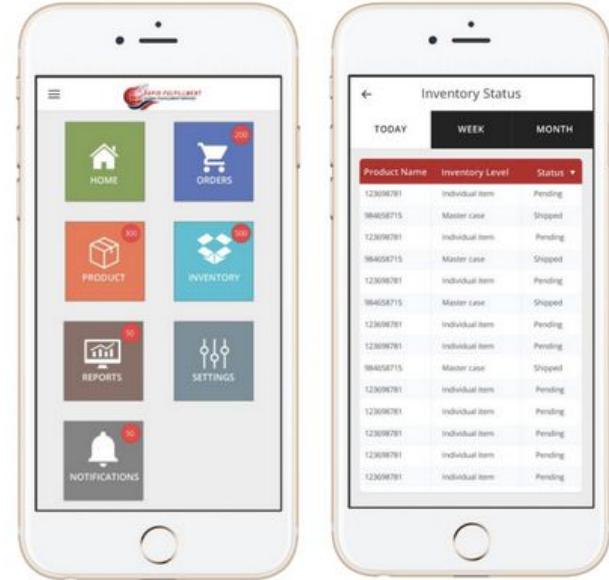
Our client CRM..

Every system user receives unique login details which are password protected. Log on access is given to the front end of our CRM so that the most frequently used reports are readily available, for example;

- ★ **Stock level** - break down of stock levels for individual SKU's
- ★ **Dashboard KPI's**- remaining stock levels and stock cover is represented in a dashboard format. Other KPI's measured are daily orders in and orders shipped
- ★ **Orders Report** -view breakdown of orders shipped, rejected, cancelled, backorders and returns. Searchable by order date, shipped date or order ID number
- ★ **Returns report** – view a list of returned orders

All orders imported are reconciled to the clients system via a reconciliation file, this is produced each time orders are marked as shipped.

Our CRM system integrates with all the major shopping carts, we can also create a bespoke integration with a clients own systems.



CRM App offers accessibility via mobile devices



Call Centre services..

In addition to fulfilment services, we can also handle your customer calls through our call centre operation serving Europe and the US. Our highly trained and experienced team offer the following;

- ★ **Branded Call Handling** – our service, your brand
- ★ **Fast Response Time**– with service level guarantee
- ★ **Inbound and Outbound** – office hours, out of hours and overflow call handling
- ★ **Fulfilment Handling** – fully integrated with our client CRM system
- ★ **Campaign Response** – maximising upsell and cross-sell opportunities
- ★ **Reporting** – our system provides our clients access to call logs in real time

We offer a flexible, scalable call centre solution and a simple highly competitive pricing structure. Our services cover all US and European time zones with foreign language speakers available as our clients require.



Customer call centre for Europe and the US



Why choose us? what our client say..

'As a new business sometimes what you think you need and what you actually need are 2 different things. Rapid Fulfillment impressed me not only with their knowledge, standards, process and customer service, but with their ability to be flexible to meet my needs and taking the time to understand my business.'

JW, Chicago, Illinois

'The best thing about Rapid Fulfillment is the way they take a personal interest in your company, they are more like a partner than a supplier. They genuinely care about helping to make your business a success'.

MD, Hove, UK

'I really appreciated the amount of knowledge that the Rapid Fulfillment team had to offer me about manufacturing and logistics. Working with a UK based company was very beneficial to our bottom line as well as our sanity.'

GS, Barcelona, Spain

'Working with Rapid Fulfillment couldn't be easier. As a marketer based in the US, I appreciate their ability to deliver my products in the UK, without any complicated red-tape. The guys at Rapid Fulfillment are solid, knowledgeable, friendly, and highly competent. Working with them is a true joy.'

JV, New York, NY

'Everybody we have dealt with in Rapid Fulfillment has been more than helpful and responsive. We feel they are a part of our team rather than just a supplier and we suspect they feel that way too.'

BC, Derby, UK

'Rapid as always been super responsive, they have hurdled over issues coming from sales traffic sources with no problems at all. They have always kept up with my volume and did it in a timely manner. They have done an outstanding job and treat you like their only account.'

MF, Las Vegas, NV





Sales@globalnaturals.co.uk

www.globalnaturals.com

